

The Record

News about admissions, records, and student systems

March 2004, Vol. 28, No. 3

Nonresidents must be off-campus to get tuition break for distance education courses

Effective in fall 2003, all on-campus, degree-seeking students are charged the same tuition for all courses they take, whether in a traditional classroom course or a distance education course.

Resident students, or students with residency status because of reciprocity or a tuition waiver, pay resident- or reciprocity-rate tuition for all courses.

Students classified as nonresidents who are on-campus, degree-seeking students are charged nonresident tuition for all courses, including distance-learning courses.

Resident tuition rates are charged for distance-learning courses taken by students who are truly off-campus—living in Texas or California, for example.

New category created for off-campus nonresidents

In order to accommodate off-campus students, a new student group category—DIST, for Distance Education

Tuition—has been created, so college staff can charge resident rates to nonresident-status students who are truly off-campus and taking distance education courses. The Registrar strongly suggests that this student group remain active for the current term of registration only.

- For questions about adding student groups to records, contact the Student Records Training Team at 612-625-2803 or techteam@sossgw.stu.umn.edu.

- For questions about a student's eligibility, contact Emily Holt at 612-624-4379 or eholt@umn.edu.

- To monitor students who have the DIST service indicator, don't forget to use UM Reports at <https://www.umreports.umn.edu>. The Student Group Report can be found under Student & Instruction—Student Records.

CLA changes language proficiency requirement

The College of Liberal Arts (CLA) voted January 27 to eliminate the Graduation Proficiency Test (GPT) as a method to demonstrate language proficiency.

In place of the GPT, students seeking the bachelor of arts degree must take and pass four semesters of a single second language with a grade of C- or better, or they can take the widely used

Language Proficiency Exam (LPE) if available in a given language.

CLA students enrolled in most bachelor of fine arts, music, and science degree programs are not required to demonstrate second language proficiency.

Details about the change are on the Web at www.class.umn.edu/degree_requirements/FAQs_About_the_Second_Language_Requirement.html.

Grade changes and supplements now submitted online

The Web process for submitting grade changes and supplements went live February 9. The expanded grade submission system makes grades available to students more quickly, eliminates paper, and speeds up a number of other processes.

The new system can be accessed at www.onestop.umn.edu/registrar/Grades/gradereporting/sqindex.html.

You will find

- access to the system
- a list of frequently asked questions
- a tutorial for entering supplemental grades
- a tutorial for approving and denying grade changes
- the uniform grading and transcript policy.

Early and late grades or grade changes will be accepted on the paper form until March 31.

Grades for courses held before fall 1999 still require paper form

Supplemental grades for courses held before fall 1999 cannot be submitted on the Web. They must be submitted to Office of the Registrar on a paper form.

Questions?

If you have questions about submitting supplemental grades, contact the Student Records Training Team at 612-625-2803 or techteam@sossgw.stu.umn.edu.

Check out updated UM Reports

The UM Reports Web site has a new customized home page that shows reports the user accesses most often.

It also provides a link to the 10 most recently published reports.

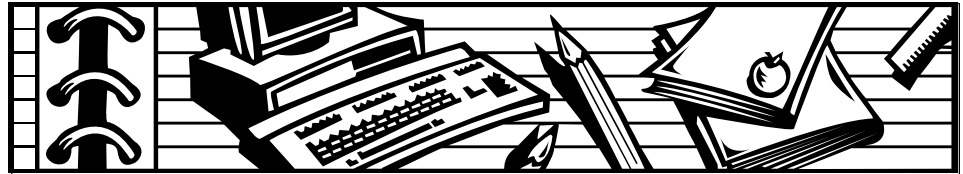
New reports on the site include

- NSF-NIH Survey of Graduate Students and Post-doctorates in Science and Engineering—an annual survey required by the National Science Foundation and National Institutes of Health.

- Graduate Career Demographics—can provide a list of all active students in a particular Primary Academic Plan for a chosen institution and term.

- Academic Record—a new report that replaces the Unofficial Academic Record. This report is now separated by academic career and contains a student's complete academic history.

Log in to UM Reports at
www.umreports.umn.edu/umreports.



Datebook: Spring semester 2004

March

- 1 Last day for Graduate School students to apply for spring commencement
- 2 Precinct caucus night—no classes held after 6 p.m.
- 3 Spring semester tuition due—first installment
- 6 Second student bill date for spring semester—due March 31
- 8 Last day to enter grades for midterm alerts
- 15 Graduate School application deadline for summer session 2004
- 15–19 Spring break
- 19 Last day for undergraduate/professional students to apply for May session 2004 graduation
- 31 Spring semester tuition due—second installment
GradFest 2004

April

- 1 GradFest 2004
Financial aid priority deadline for continuing students
- 3 Third (final) student bill date for spring semester—due April 28
- 4 Daylight Savings Time begins
- 6 Registration begins for May session and summer 2004 for admitted students
- 8 Queued registration begins for fall 2004
- 9–13 Institute of Technology (IT) Week
- 13 Registration begins for summer 2004 for non-admitted students
- 28 Spring semester tuition due—final installment
- 30 Open registration and non-degree-seeking-student registration begins for fall 2004

May

- 7 Last day of instruction for spring semester

The Record


The Record is published monthly for colleges and departments at the University of Minnesota, Twin Cities, by the Office of the Executive Vice President and Provost. Subscribe to the e-mail edition at onestop.umn.edu/Events/newsletters.html.

Please direct address changes to Barb Carlson, 612-626-1785, or b-carl1@umn.edu.

Gayla Marty, editor
Communication Services
Office of University Relations
3 Morrill Hall
100 Church Street S.E.
Minneapolis, MN 55455
Phone: 612-625-0552
E-mail: marty001@umn.edu

The University of Minnesota is an equal opportunity educator and employer.

This publication is available in alternative formats upon request. Contact Barb Carlson, Communication Services, 612-626-1785.

 Printed on recycled and recyclable paper containing 10 percent postconsumer material.